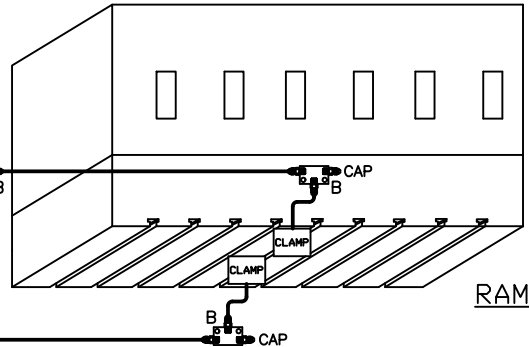
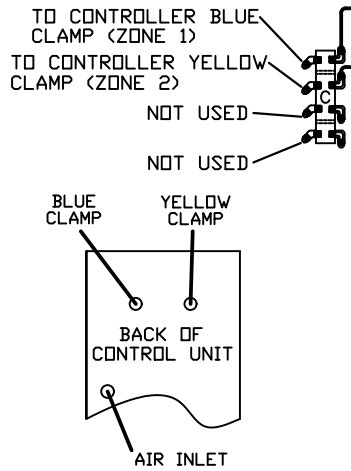
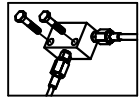
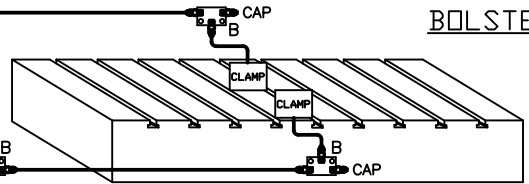


MOUNTING EXAMPLE

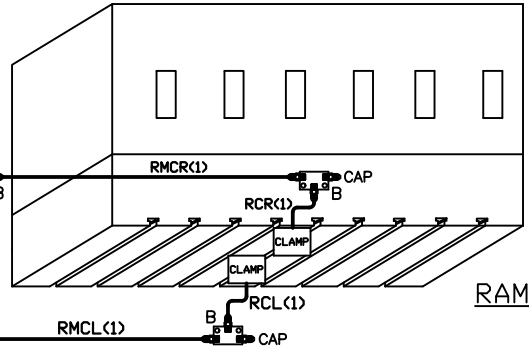
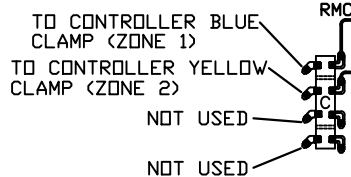


RAM



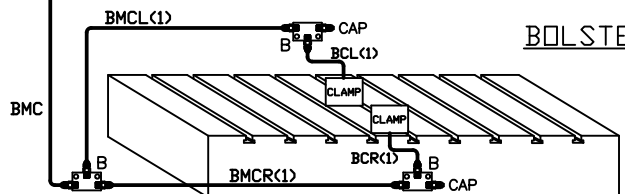
BOLSTER

RAM MAIN CLAMP (RMC)



RAM

BOLSTER MAIN CLAMP (BMC)



BOLSTER

DI-2L2L INSTALLATION KIT

ILLUSTRATION	QTY	PFA-ACC P/N	DESCRIPTION	
B	6	HC14649	MANIFOLD, FULL ASSY	
	BOM (EACH)			
	1	HB10680	MANIFOLD CONNECTOR, STRAIGHT	
	3	FF00019	CONNECTOR, ELBOW, 90°	
	1	FF01835	CAP, 37° FLARE	
	2	FAB0200	1/4-20 HEX SCREW x 1 1/4" LONG	
C	1	HC10050	MANIFOLD, FULL ASSY	
	BOM (EACH)			
	1	HB10050	MANIFOLD CONNECTOR, ELBOW 90°	
	4	FF00083	CONNECTOR, ELBOW, 45°	
	4	FF00070	CONNECTOR, ELBOW, 45°	
		4	FF01835	CAP, 37° FLARE
	2	2214793	STICKER, BLUE	
	2	2214792	STICKER, YELLOW	
	2	2214794	STICKER, WHITE	
		2	2214791	STICKER, BLACK
	2	FAB0224	1/4-20 HEX SCREW x 1 1/2" LONG	
D	6	FA06237	DOUBLE JIFFY CLIP (NOT SHOWN)	
E	6	FA05768	JIFFY CLIP (NOT SHOWN)	
F	16	FA30406	1/4-20 B7HD SCREW x 3/8" LONG (NOT SHOWN)	

ILLUSTRATION	QTY	PFA-ACC P/N	DESCRIPTION
			NOTE: HOSE AND LOOSE FITTINGS SHIPPED IN BULK. HOSE ASSEMBLY/FABRICATION BY CUSTOMER AT THEIR FACILITY XX = LENGTH IN INCHES
RMC-XX	1	14499-XX	XX =
RMCR(1)-XX	1	14499-XX	XX =
RMCL(1)-XX	1	14499-XX	XX =
RRC(1)-XX	1	14499-XX	XX =
RCL(1)-XX	1	14499-XX	XX =
BMC-XX	1	14499-XX	XX =
BMCR(1)-XX	1	14499-XX	XX =
BMCL(1)-XX	1	14499-XX	XX =
BCR(1)-XX	1	14499-XX	XX =
BCL(1)-XX	1	14499-XX	XX =
NOTE: WHEN SHIPPING BULK HOSE AND FITTINGS, SEND THE FOLLOWING QUANTITY OF ITEMS: HOSE, PART #H014500, 75 FEET FITTINGS, PART #FF14502, 22 PIECES			
HOW TO MEASURE HOSE LENGTHS: 			
IMPORTANT! LEAVE ROOM FOR PRESS AND CLAMP MOVEMENT!			

DI-2L2L

PFA, INC. 266-250-4400 (Fax), pfa-inc.com	HEN 6-17-09	PFA, INC. 1118 W18251 BLUNSEN DRIVE, GERMANTOWN, VI. 53022 266-250-4400, 266-250-4409 (Fax), pfa-inc.com
	SCALE N.T.S.	INSTALLATION KIT
	SHEET 1 of 1	DRAWING NUMBER DI-2L2L