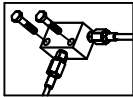
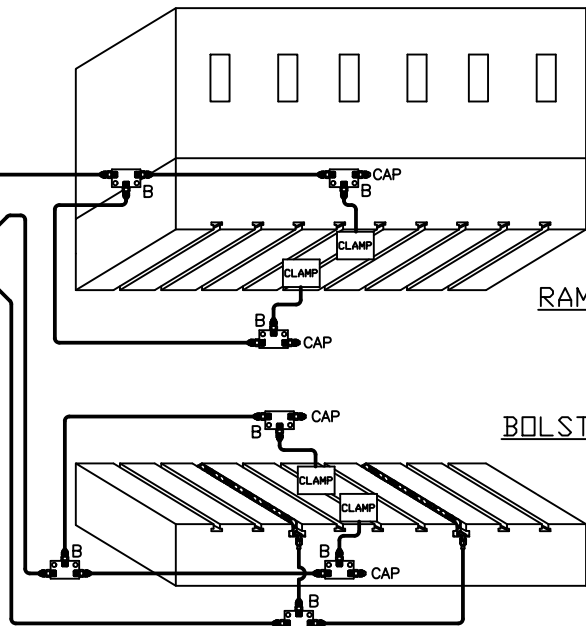
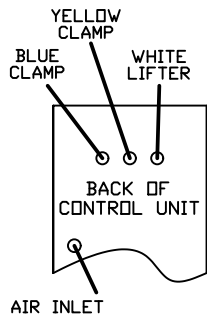


**MOUNTING EXAMPLE**

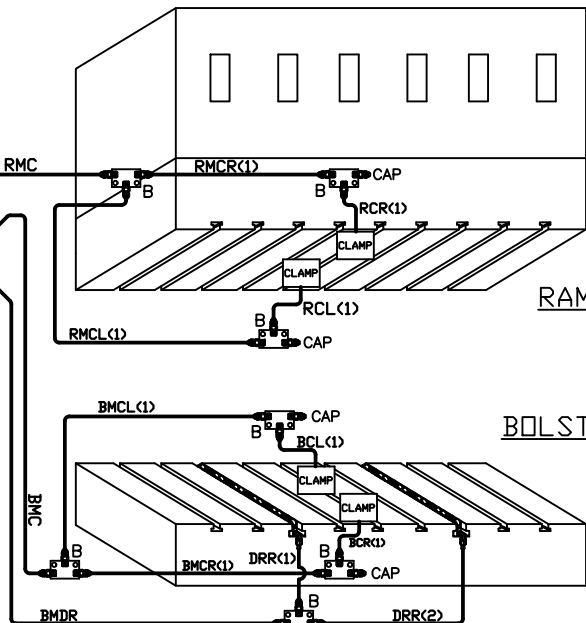


TO CONTROLLER BLUE CLAMP (ZONE 1)  
 TO CONTROLLER YELLOW CLAMP (ZONE 2)  
 TO CONTROLLER WHITE LIFTER (ZONE 3)  
 NOT USED



**RAM MAIN CLAMP (RMC)**

TO CONTROLLER BLUE CLAMP (ZONE 1)  
 TO CONTROLLER YELLOW CLAMP (ZONE 2)  
 TO CONTROLLER WHITE LIFTER (ZONE 3)  
 NOT USED



**BOLSTER MAIN CLAMP (BMC)**

**DI-2L2L-2DL INSTALLATION KIT**

ILLUSTRATION	QTY	PFA-ACC P/N	DESCRIPTION	ILLUSTRATION	QTY	PFA-ACC P/N	DESCRIPTION
B	7	HC14649	MANFOLD, FULL ASSY		1	14499-XX	NOTE: HOSE AND LOOSE FITTINGS SHIPPED IN BULK. HOSE ASSEMBLY/FABRICATION BY CUSTOMER AT THEIR FACILITY. XX = LENGTH IN INCHES.
	BOM (EACH)						
	1	HB10680	MANFOLD CONNECTOR, STRAIGHT CAP, 37° FLARE				
	3	FF00019					
	4	FF01835					
	2	FAB0200	1/4-20 HEX SCREW x 1 1/4" LONG		1	14499-XX	XX =
	1	HC10050	MANFOLD, FULL ASSY		1	14499-XX	XX =
C	BOM (EACH)				1	14499-XX	XX =
	1	HB10050	MANFOLD CONNECTOR, ELBOW 90°		1	14499-XX	XX =
	4	FF00063	CONNECTOR, ELBOW, 45°		1	14499-XX	XX =
	4	FF00070	CONNECTOR, ELBOW, 45°		1	14499-XX	XX =
	4	FF01835	CAP, 37° FLARE		1	14499-XX	XX =
	2	2214783	STICKER, BLUE		1	14499-XX	XX =
	2	2214782	STICKER, YELLOW		1	14499-XX	XX =
	2	2214784	STICKER, WHITE		1	14499-XX	XX =
	2	2214791	STICKER, BLACK		1	14499-XX	XX =
		2	FAB0224	1/4-20 HEX SCREW x 1 1/2" LONG		1	14499-XX
D	8	FA06237	DOUBLE JIFFY CLIP (NOT SHOWN)		NOTE: WHEN SHIPPING BULK HOSE AND FITTINGS, SEND THE FOLLOWING QUANTITY OF ITEMS: HOSE, PART #H014500, 100 FEET FITTINGS, PART #FF14502, 30 PIECES		
E	16	FA05766	JIFFY CLIP (NOT SHOWN)		HOW TO MEASURE HOSE LENGTHS:		
F	24	FA30406	1/4-20 BTHD SCREW x 3/8" LONG (NOT SHOWN)			IMPORTANT: LEAVE ROOM FOR PRESS AND CLAMP MOVEMENT!	

**DI-2L2L-2DL**

PFA-ACC P/N QTY SCALE SHEET		PFA, INC. 110 WILSON BLVD, GERMANTOWN, VI. 53022 266-250-4410, 266-250-4409 (fax), pfa-inc.com
	MEM 6-18-09	INSTALLATION KIT
	N.T.S.	DRAWING NUMBER
	1 of 1	DI-2L2L-2DL