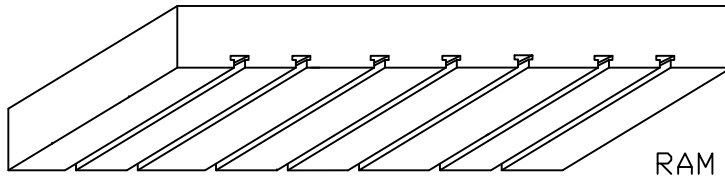
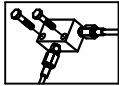
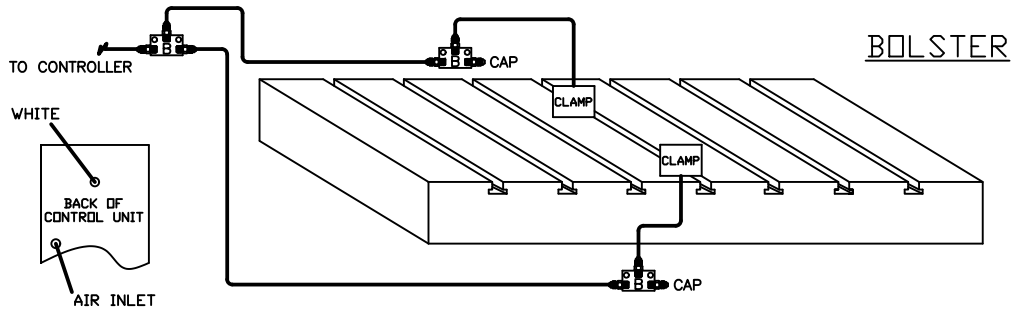


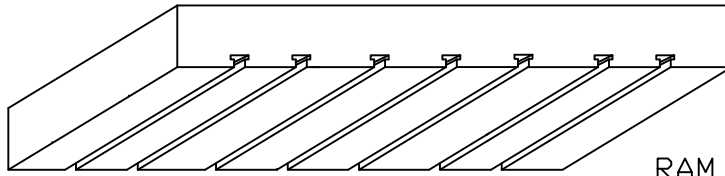
Mounting Example



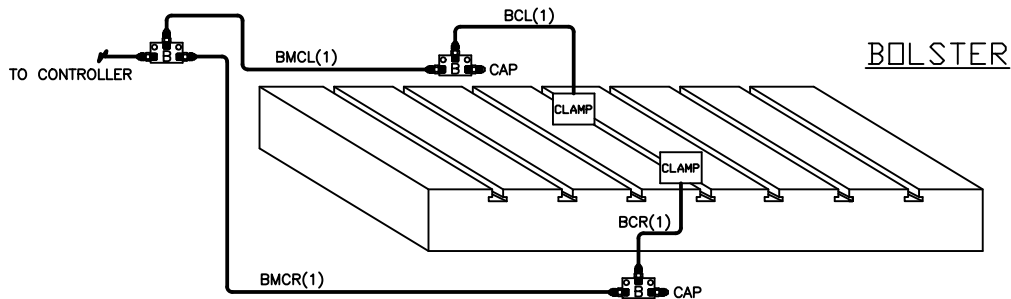
RAM



BOLSTER



RAM



BOLSTER

DI-002S INSTALLATION KIT

ILLUSTRATION	QTY	PFA-ACC P/N	DESCRIPTION
B	3	HC14848	MANIFOLD, FULL ASSY
	BOM (EACH)		
	1	HB10880 FF02018 FF01835	MANIFOLD CONNECTOR, STRAIGHT CAP, 3/2" FLARE
	2	FAB0200	1/4-20 HEX SCREW x 1 1/4" LONG
E	8	FA05788	JIFFY CLIP (NOT SHOWN)
F	8	FA30408	1/4-20 BTRD SCREW x 3/8" LONG (NOT SHOWN)

ILLUSTRATION	QTY	PFA-ACC P/N	DESCRIPTION
			NOTE: HOSE AND LOOSE FITTINGS SHIPPED IN BULK. HOSE ASSEMBLY/FABRICATION BY CUSTOMER AT THEIR FACILITY XX = LENGTH IN INCHES
BMCR(1)-XX	1	14499-XX	XX =
BMCL(1)-XX	1	14499-XX	XX =
BCR(1)-XX	1	14499-XX	XX =
BCL(1)-XX	1	14499-XX	XX =
NOTE: WHEN SHIPPING BULK HOSE AND FITTINGS, SEND THE FOLLOWING QUANTITY OF ITEMS; HOSE, PART #HO14500, 25 FEET FITTINGS, PART #FF14502, 10 PIECES			
HOW TO MEASURE HOSE LENGTHS:  XX			
IMPORTANT! LEAVE ROOM FOR PRESS AND CLAMP MOVEMENT!			

DI-002S

HEN 9-2-14, REV. A, AND BULK HOSE, EON 8/14/08		PFA, INC. N118 W18251 NUNSEN DRIVE, GERHANTOWN, VI. 53022 262-250-4410, 262-250-4409 (fax), pfa-inc.com
	HEM 6-16-09	
	SCALE	N.T.S.
	SHEET	1 of 1
	DRAWING NUMBER	DI-002S