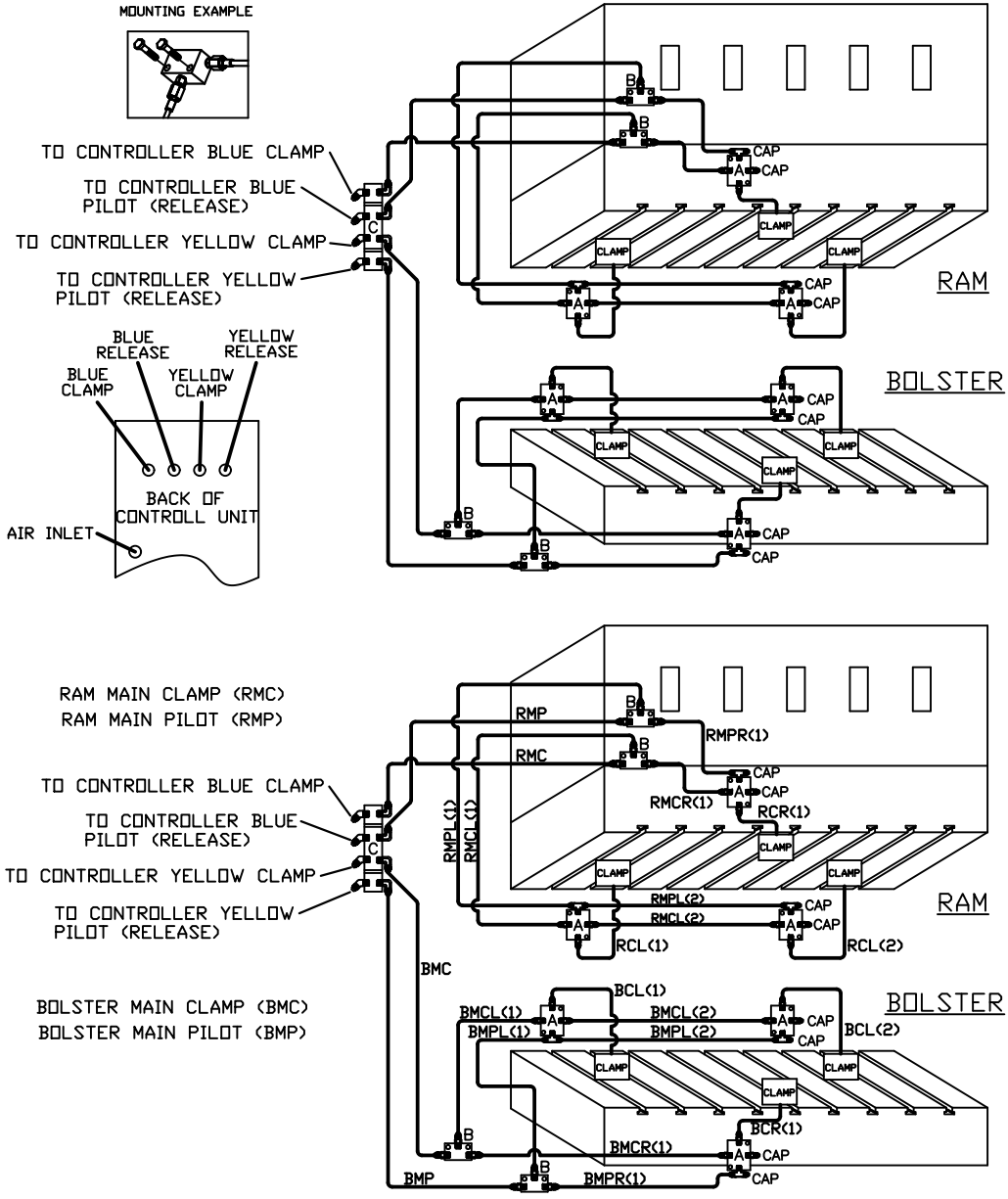
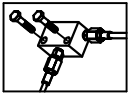


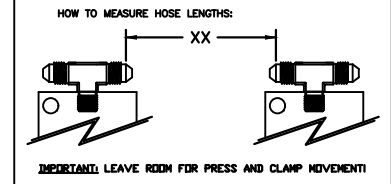
Mounting Example



DI-3C3C INSTALLATION KIT

* CHECK VALVE ASS'Y, SEE NOTE BELOW				DI-3C3C INSTALLATION KIT				
ILLUSTRATION	QTY	PFA-ACC P/N	DESCRIPTION	ILLUSTRATION	QTY	PFA-ACC P/N	DESCRIPTION	
A	8	HC41973	CHECK VALVE, FULL ASSY	E	8	FA05748	JIFFY CLIP (NOT SHOWN)	
	BOM (EACH)				F	20	FA30406	1/4-20 6HD SCREW x 3/8" LONG (NOT SHOWN)
	1	HE41973	CHECK VALVE ASSY CAP, 37° FLARE					
2	FF01835		2	FAB0200	1/4-20 HEX SCREW x 1 1/4" LONG			
B	4	HC14848	MANIFOLD, FULL ASSY	C	1	14499-XX	NOTE: HOSE AND LOOSE FITTINGS SHIPPED IN BULK, HOSE ASSEMBLY/FABRICATION BY CUSTOMER AT THEIR FACILITY XX = LENGTH IN INCHES	
	BOM (EACH)				RMC-XX	1	14499-XX	XX =
	1	HB10880	MANIFOLD CONNECTOR, STRAIGHT CAP, 37° FLARE		RMP-XX	1	14499-XX	XX =
3	FF00019		RMCR(1)-XX	1	14499-XX	XX =		
4	FF01835		RMPL(1)-XX	1	14499-XX	XX =		
2	FAB0200	1/4-20 HEX SCREW x 1 1/4" LONG	RCR(1)-XX	1	14499-XX	XX =		
C	1	HC10050	MANIFOLD, FULL ASSY	RMCL(1)-XX	1	14499-XX	XX =	
	BOM (EACH)			RMPL(1)-XX	1	14499-XX	XX =	
	1	HB10050	MANIFOLD CONNECTOR, ELBOW 90°	RMPL(2)-XX	1	14499-XX	XX =	
4	FF00063	CONNECTOR, ELBOW, 45°	RCL(1)-XX	1	14499-XX	XX =		
4	FF00070		RCL(2)-XX	1	14499-XX	XX =		
2	FAB0224	1/4-20 HEX SCREW x 1 1/2" LONG	BMC-XX	1	14499-XX	XX =		
D	12	FA08237	DOUBLE JIFFY CLIP (NOT SHOWN)	BMP-XX	1	14499-XX	XX =	
				BMCR(1)-XX	1	14499-XX	XX =	
				BMCR(2)-XX	1	14499-XX	XX =	

* NOTE: CHECK VALVE ASS'Y NOT INCLUDED AS PART OF THE INSTALL KIT, ORDER CHECK VALVES SEPARATELY.



DI-3C3C

PFA, INC.	
1118 W18251 BURGESS DRIVE, GERMANTOWN, VA, 22062	
252-250-4410, 252-250-4409 (Fax), www.pfa-inc.com	
HEM 11-13-17	INSTALLATION KIT
SCALE N.T.S.	DRAWING NUMBER
SHEET 1 of 1	DI-3C3C