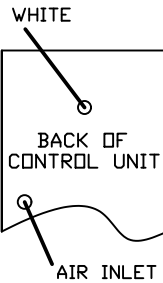
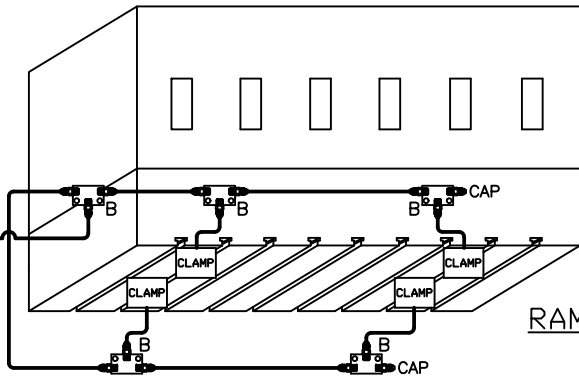


MOUNTING EXAMPLE

TO CONTROLLER WHITE  
TO CONTROLLER AIR INLET



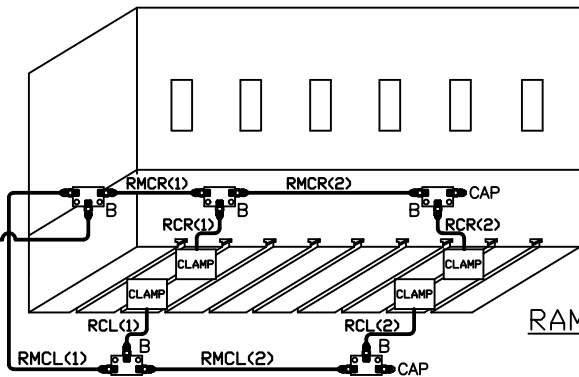
SHOP AIR SUPPLY



RAM MAIN CLAMP (RMC)

TO CONTROLLER WHITE  
TO CONTROLLER AIR INLET

SHOP AIR SUPPLY



### DI-4L00-R INSTALLATION KIT

ILLUSTRATION	QTY	PFA-ACC P/N	DESCRIPTION	ILLUSTRATION	QTY	PFA-ACC P/N	DESCRIPTION
B	5	HC14849	MANIFOLD, FULL ASS'Y		1	14499-XX	NOTE: HOSE AND LOOSE FITTINGS SHIPPED IN BULK. HOSE ASSEMBLY/FABRICATION BY CUSTOMER AT THEIR FACILITY.  XX = LENGTH IN INCHES
	BOM (EACH)						
	1	HB10680	MANIFOLD CONNECTOR, STRAIGHT CAP, 37° FLARE				
	2	FA80200	1/4"-20 HEX SCREW x 1 1/4" LONG				
C	1	HL02711W	MANIFOLD, FULL ASS'Y		1	14499-XX	NOTE: WHEN SHIPPING BULK HOSE AND FITTINGS, SEND THE FOLLOWING QUANTITY OF ITEMS; HOSE, PART #H014500, 60 FEET FITTINGS, PART #FF14502, 20 PIECES
	BOM (EACH)						
	1	HB02710	MANIFOLD CONNECTOR, 1/8M x JIC				
	1	FF00011	CONNECTOR, 1/8M x 1/8M				
	1	FF00024	CONNECTOR, QDC MALE				
	1	FF01826	CONNECTOR, AIR CPLR				
0	2214783	STICKER, BLUE					
2	2214794	STICKER, WHITE					
0	2214792	STICKER, YELLOW					
1	FF01835	CAP, 37° FLARE					
2	FA30424	1/4"-20 BUTT HD SCREW x 1 1/2" LONG					
D	2	FA06237	DOUBLE JIFFY CLIP (NOT SHOWN)		2	14499-XX	HOW TO MEASURE HOSE LENGTHS:  XX
E	10	FA05768	JIFFY CLIP (NOT SHOWN)				
F	12	FA30406	1/4"-20 BTHD SCREW x 3/8" LONG (NOT SHOWN)				
<b>IMPORTANT! LEAVE ROOM FOR PRESS AND CLAMP MOVEMENT!</b>							

# DI-4L00-R

NEW & REV. OR REVISE FOR ECU UPDATE MANIFOLD SPECS #12-17	HEN 3-31-16	PFA, INC. 1118 W18251 BUNSEN DRIVE, GERMANTOWN, VI 23022 262-250-4410, 262-250-4409 (fax), pfa-inc.com	
	SCALE N.T.S.		INSTALLATION KIT
	SHEET 1 of 1		DRAWING NUMBER DI-4L00-R