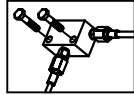
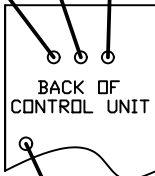


MOUNTING EXAMPLE

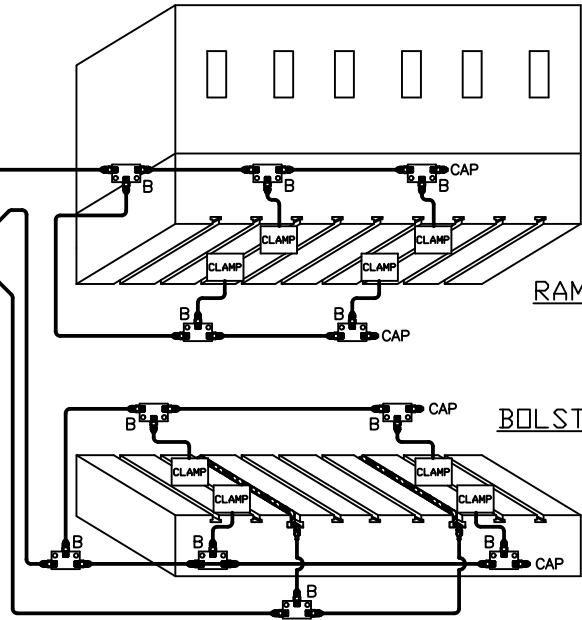


TO CONTROLLER BLUE CLAMP (ZONE 1)
 TO CONTROLLER YELLOW CLAMP (ZONE 2)
 TO CONTROLLER WHITE LIFTER (ZONE 3)
 NOT USED

YELLOW CLAMP
 BLUE CLAMP
 WHITE LIFTER

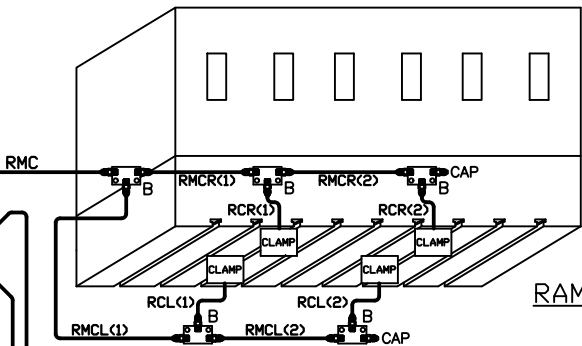


AIR INLET

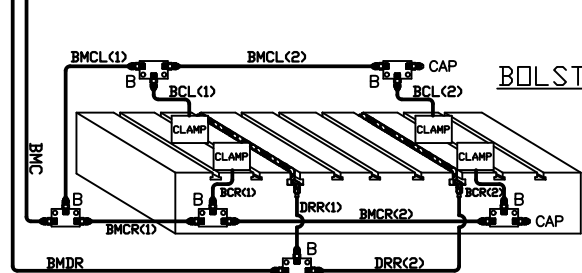


RAM MAIN CLAMP (RMC)

TO CONTROLLER BLUE CLAMP (ZONE 1)
 TO CONTROLLER YELLOW CLAMP (ZONE 2)
 TO CONTROLLER WHITE LIFTER (ZONE 3)
 NOT USED



BOLSTER MAIN CLAMP (BMC)



DI-4L4L-2DL INSTALLATION KIT

ILLUSTRATION	QTY	PFA-ACC P/N	DESCRIPTION	ILLUSTRATION	QTY	PFA-ACC P/N	DESCRIPTION
B	11	HC14649	MANIFOLD, FULL ASSY		1	14499-XX	XX =
	BOM (EACH)						
	1	HB10680	MANIFOLD CONNECTOR, STRAIGHT				
	3	FF00019	CAP, 3/8" FLARE				
C	1	HC10050	MANIFOLD, FULL ASSY		1	14499-XX	XX =
	BOM (EACH)						
	1	HB10050	MANIFOLD CONNECTOR, ELBOW 90°				
	4	FF00083	CONNECTOR, ELBOW, 45°				
	4	FF00070	CAP, 3/8" FLARE				
	2	2214793	STICKER, BLUE				
	2	2214792	STICKER, YELLOW				
	2	2214794	STICKER, WHITE				
	2	2214791	STICKER, BLACK				
	2	FA80224	1/4"-20 HEX SCREW x 1 1/2" LONG				
D	10	FA08237	DOUBLE JIFFY CLIP (NOT SHOWN)	NOTE: WHEN SHIPPING BULK HOSE AND FITTINGS, SEND THE FOLLOWING QUANTITY OF ITEMS: HOSE, PART #H014500, 150' FITTINGS, PART #FF14502, 46 PIECES			
E	20	FA05768	JIFFY CLIP (NOT SHOWN)	HOW TO MEASURE HOSE LENGTHS: 			
F	30	FA30406	1/4"-20 BTHD SCREW x 3/8" LONG (NOT SHOWN)	IMPORTANT: LEAVE ROOM FOR PRESS AND CLAMP MOVEMENT!			

DI-4L4L-2DL

REV. A, EDN 013-11 HEN 3-27-13	PFA, INC. N18 V18251 BUNSEN DRIVE, GERMANTOWN, VI. 23022 252-250-4410, 252-250-4409 (fax), pfa-inc.com
HEN 6-18-09	INSTALLATION KIT
SCALE N.T.S.	DRAWING NUMBER DI-4L4L-2DL
SHEET 1 of 1	